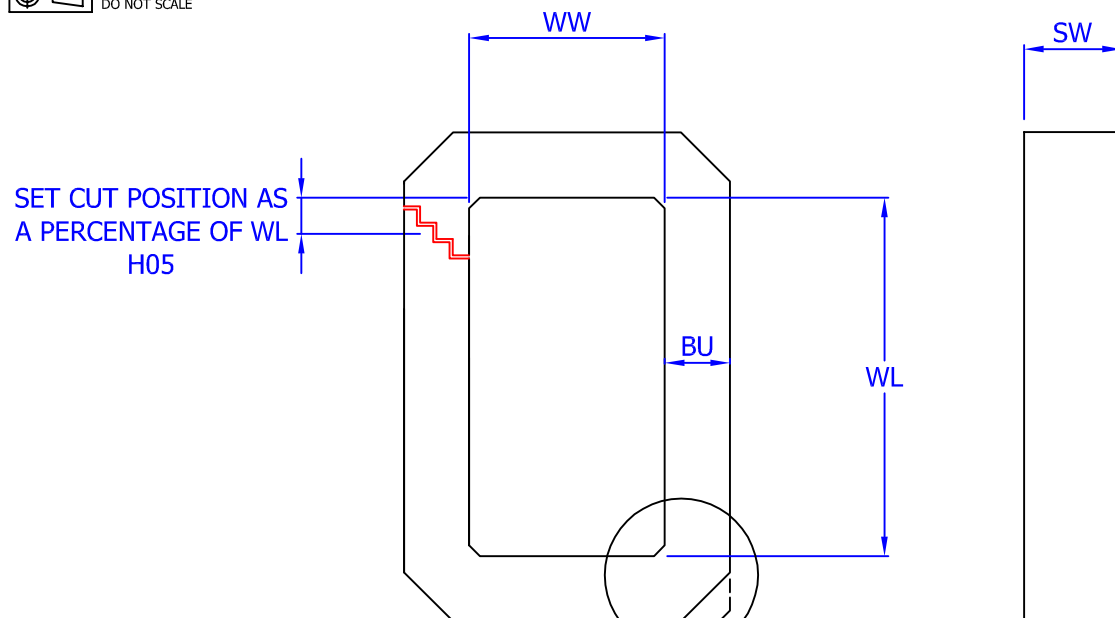
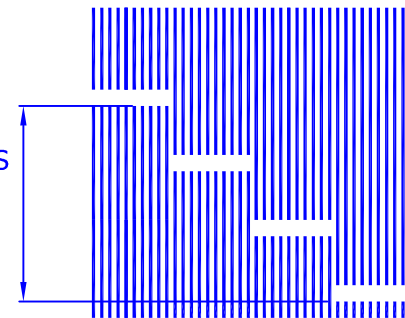




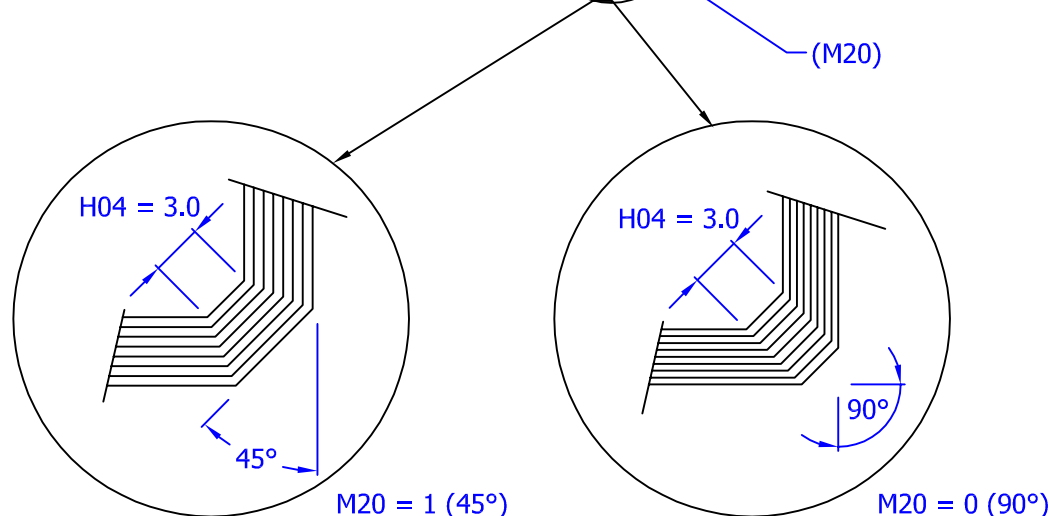
3rd Angle Projection
DO NOT SCALE



SELECT NUMBER OF OVERLAPS
BEFORE REPEATNG (H66)
(4 ONLY SHOWN)



SELECT NUMBER OF LAMINATIONS
PER OVERLAP (H68)



WL	MM	+ 0.5 - 0.0
WW	MM	+ 0.5 - 0.0
BUP	MM	+ 0.5 - 0.0
SW	MM	+ 0.25 - 0.25
M20	1	
H04	3000 MICRON	
H66	20	
H68	10	
H05	7%	
MATL		

- CORNER SELECTION 0 = 90°
1 = 45°

- CORNER RADIUS

- # OVERLAPS BEFORE REPEAT

- # LAMINATIONS PER OVERLAP

- CUT POSITION

A.E.M. PART # STEPBUT7

RECTANGULAR UNICORE WITH 45°/90° CORNERS
AND A ONE CUT STEP BUTT FACE

Title: **45°/90° STEP BUTT UNICORE**

Eng : M. NAVACCHI

Scale:

Drawing File

Assoc Text File

Assoc Program

Date : DEC 2001

No Scale

STEPBUT7

A.E.M. CORES PTY LTD
95 BEDFORD ST GILLMAN SA 5013

Phone: 08 8341 0086
Fax: 08 8341 0225